



Ghrelin Receptor Polyclonal Antibody

Catalog No	YP-Ab-12964
Isotype	IgG
Reactivity	Human;Rat;Mouse
Applications	WB;IHC;IF
Gene Name	GHSR
Protein Name	Growth hormone secretagogue receptor type 1 (GHS-R) (GH-releasing peptide receptor) (GHRP) (Ghrelin receptor)
Immunogen	Synthetic Peptide of Ghrelin Receptor AA range: 290-370
Specificity	Ghrelin Receptor protein(A232) detects endogenous levels of Ghrelin Receptor
Formulation	Liquid in PBS containing 50% glycerol, 0.5% BSA and 0.02% sodium azide.
Source	Polyclonal, Rabbit,IgG
Purification	The antibody was affinity-purified from rabbit antiserum by affinity-chromatography using specific immunogen.
Dilution	WB 1:1000-2000, IHC 1:100-200. IF 1:50-200
Concentration	1 mg/ml
Purity	≥90%
Storage Stability	-20°C/1 year
Synonyms	Growth hormone secretagogue receptor type 1 (GHS-R;GH-releasing peptide receptor;GHRP;Ghrelin receptor)
Observed Band	41kD
Cell Pathway	Cell membrane; Multi-pass membrane protein.
Tissue Specificity	Pituitary and hypothalamus.
Function	disease:Defects in GHSR may be a cause of short stature [MIM:604271]. Short stature is defined by a subnormal rate of growth.,function:Receptor for ghrelin, coupled to G-alpha-11 proteins. Stimulates growth hormone secretion. Binds also other growth hormone releasing peptides (GHRP) (e.g. Met-enkephalin and GHRP-6) as well as non-peptide, low molecular weight secretagogues (e.g. L-692,429, MK-0677, adenosine).,similarity:Belongs to the G-protein coupled receptor 1 family.,tissue specificity:Pituitary and hypothalamus.,
Background	This gene encodes a member of the G-protein coupled receptor family. The encoded protein may play a role in energy homeostasis and regulation of body weight. Two identified transcript variants are expressed in several tissues and are evolutionary conserved in fish and swine. One transcript, 1a, excises an intron and encodes the functional protein; this protein is the receptor for the Ghrelin ligand and defines a neuroendocrine pathway for growth hormone release. The second transcript (1b) retains the intron and does not function as a receptor for

Ghrelin; however, it may function to attenuate activity of isoform 1a. Mutations in this gene are associated with autosomal idiopathic short stature.[provided by RefSeq, Apr 2010],

matters needing attention

Avoid repeated freezing and thawing!

Usage suggestions

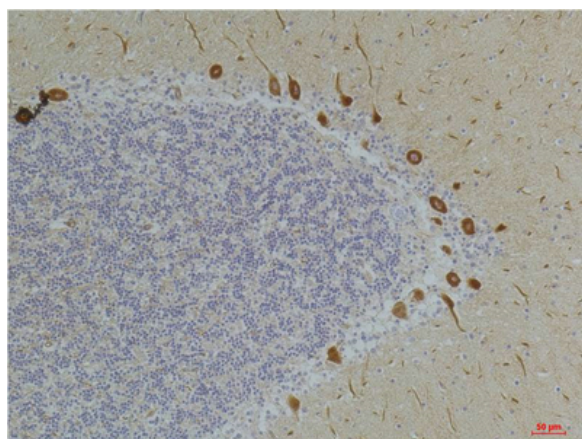
This product can be used in immunological reaction related experiments. For more information, please consult technical personnel.



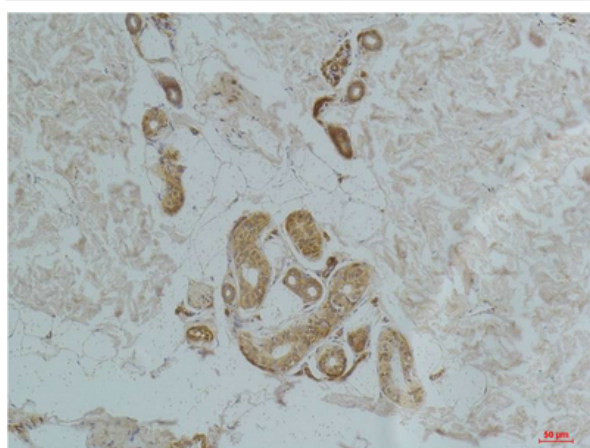
Products Images

1 2

Western blot analysis of 1) Rat LiverTissue, 2)Jurkat with Ghrelin Receptor Rabbit pAb diluted at 1:2,000.



Immunohistochemical analysis of paraffin-embedded Human BrainTissue using Ghrelin Receptor Rabbit pAb diluted at 1:200.



Immunohistochemical analysis of paraffin-embedded Human Skin Tissue using Ghrelin Receptor Rabbit pAb diluted at 1:200.